



BAHAMA

*Bahama*TM
BOATWORKS





Bahama 41

MERCUURY







Why... absolutely nothing compares.

Throughout the evolution of modern FRP (Fiber-Reinforced Pressure) vessels, there has been a tendency for boat designers and builders to concentrate on hull shapes that produce ever faster speeds. Unfortunately, some of the very same features that reduce drag, such as hull steps, also have a tendency to significantly reduce directional stability and efficiency in certain sea conditions.

Seakeeping: The established limits for the vessel's responses. "These are based on the vessel motions and accelerations experienced and include comfort criteria and performance based values such as involuntary speed reduction and observable phenomenon such as bow immersion." (St. Denis, 1976)

Bahama Boat Works considers safety at sea to be its FIRST design criteria, not an afterthought! Each of its hull forms was computer designed based on data collected from over 80 years of documented planing hull research and application. Hydrodynamic efficiency is achieved by the initial design shape combined with maintaining incredibly close dimensional tolerances from the digital design program, thru the CNC cut model, to the lowest shrink tooling system available for the mold making process.

Bahama Boat Works hulls are as symmetrical and fair as modern technology will allow. Natural dynamic directional stability in all seaways - whether head seas, cross seas, or following seas - has been of primary consideration to their design team. Likewise, questions of ready pitch and roll trim range were treated with the utmost importance.

As a result, every Bahama Boat Works center console boat hull offers unusually predictable stability, control and comfort - not only when seas are flat, but most importantly when conditions turn dangerous. Shooting an inlet in a large following sea becomes a pleasantly reassuring experience, not an unpredictable scary thrill ride. This is the result of hull shapes that were created and engineered to work as well at slow speeds as they do at high speeds. Their seakeeping ability makes them unusually seaworthy. At Bahama Boat Works seaworthiness is not a forgotten factor and your safety is not an afterthought!

Let our **customers** and the **ride** speak for themselves. Call us for an appointment.

To learn more, visit: bahamaboatworks.com/why-bahama.html



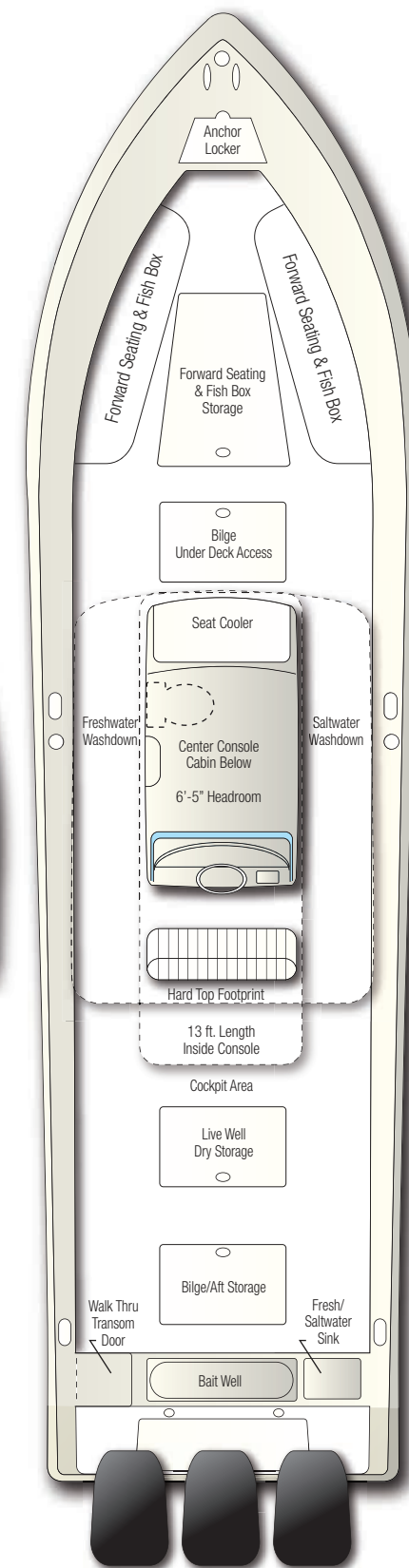
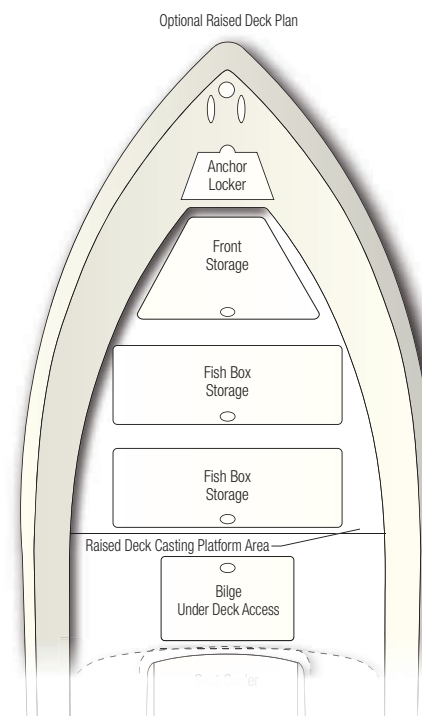


The ultimate in fishing performance.

The Bahama 41 invites you to challenge its offshore capabilities. This special vessel inspires a confidence borne of an aerospace-style integrated structure, inherent dynamic stability, & class leading comfort. When combined with world-class performance, & remarkable range of trim, the result is a stand-alone product capable of safely handling heavy sea conditions.

SPECIFICATIONS

Length:	41'-3"
Beam:	11'-0"
Draft (engines down):	2'-4"
Draft (engines up):	1'-11"
Weight:	9,500 lbs
Deadrise:	60° - 24°
Fuel:	580 gallons
Freshwater Tank:	65 gal.
Live Bait Well:	60 gal.
Engine Capacity:	Up to 1700 HP (Quads avail.)





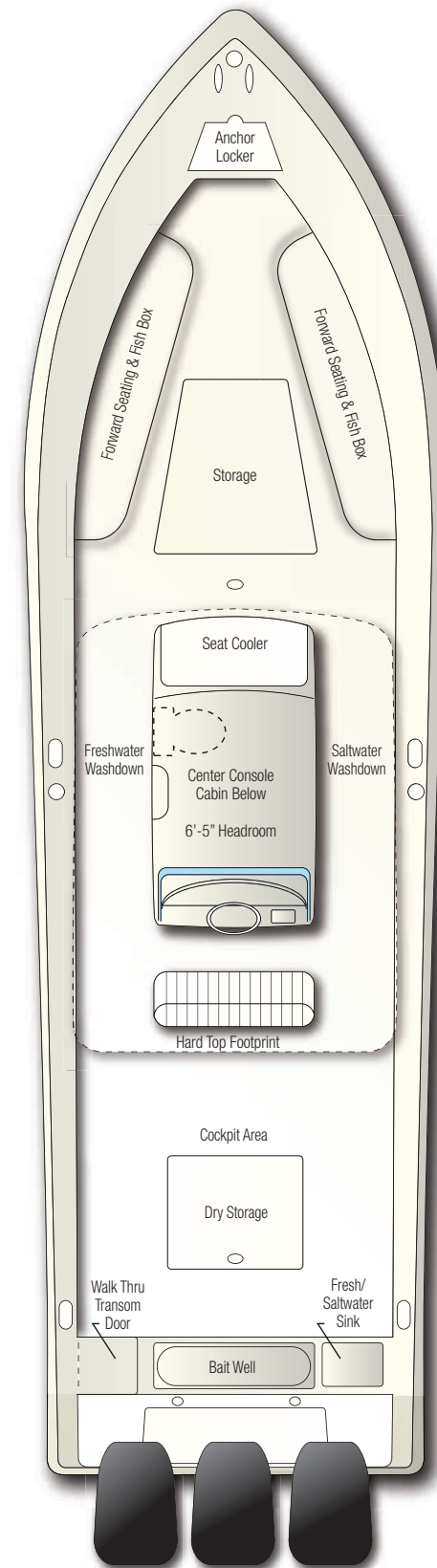


Unrivaled super-center-console class performance.

The Bahama 37 shares the same unique seakeeping abilities & matchless ride of its larger sibling, the Bahama 41; Build quality & amenities are also the same. The result is a uniquely versatile blue water craft with unusual performance & range capabilities for its size. This is not a "fair weather friend" only comfortable at the sand bar; this is a serious fishing machine.

SPECIFICATIONS

Length:	38'-1"
Beam:	11'-0"
Draft (engines down):	2'-4"
Draft (engines up):	1'-11"
Weight:	8,000 lbs
Deadrise:	60° - 24°
Fuel:	475 gallons
Freshwater Tank:	60 gallons
Live Bait Well:	60 gallons
Engine Capacity:	Up to 1200 HP





GARMIN

Bahama 34

Bahama 34

YAMAHA

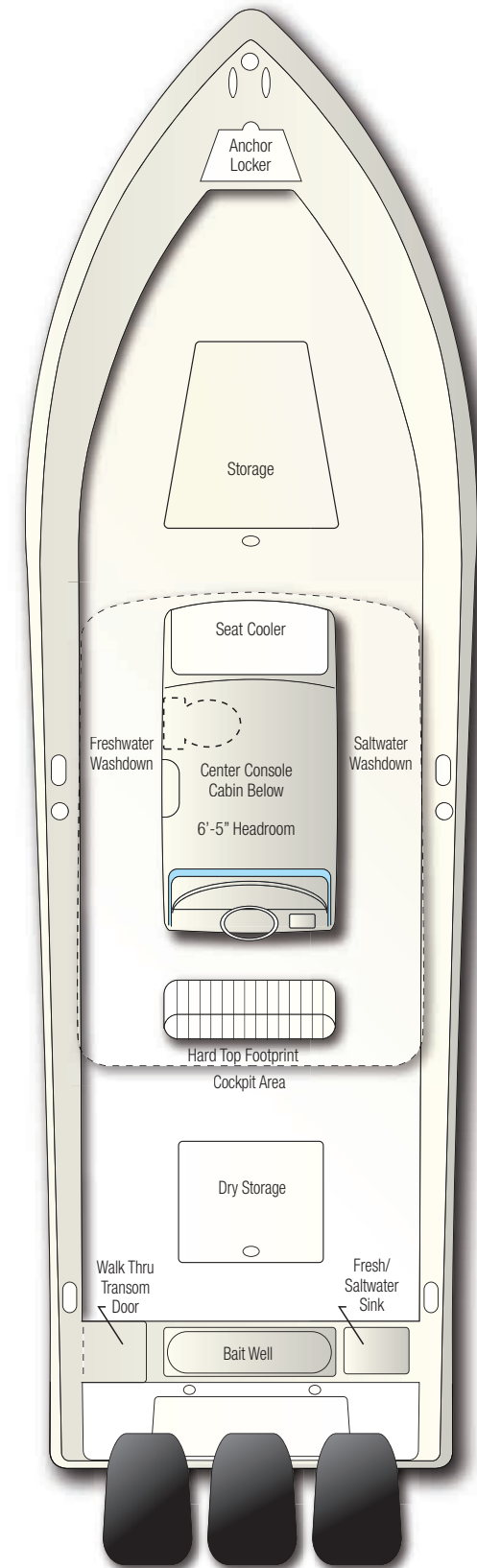


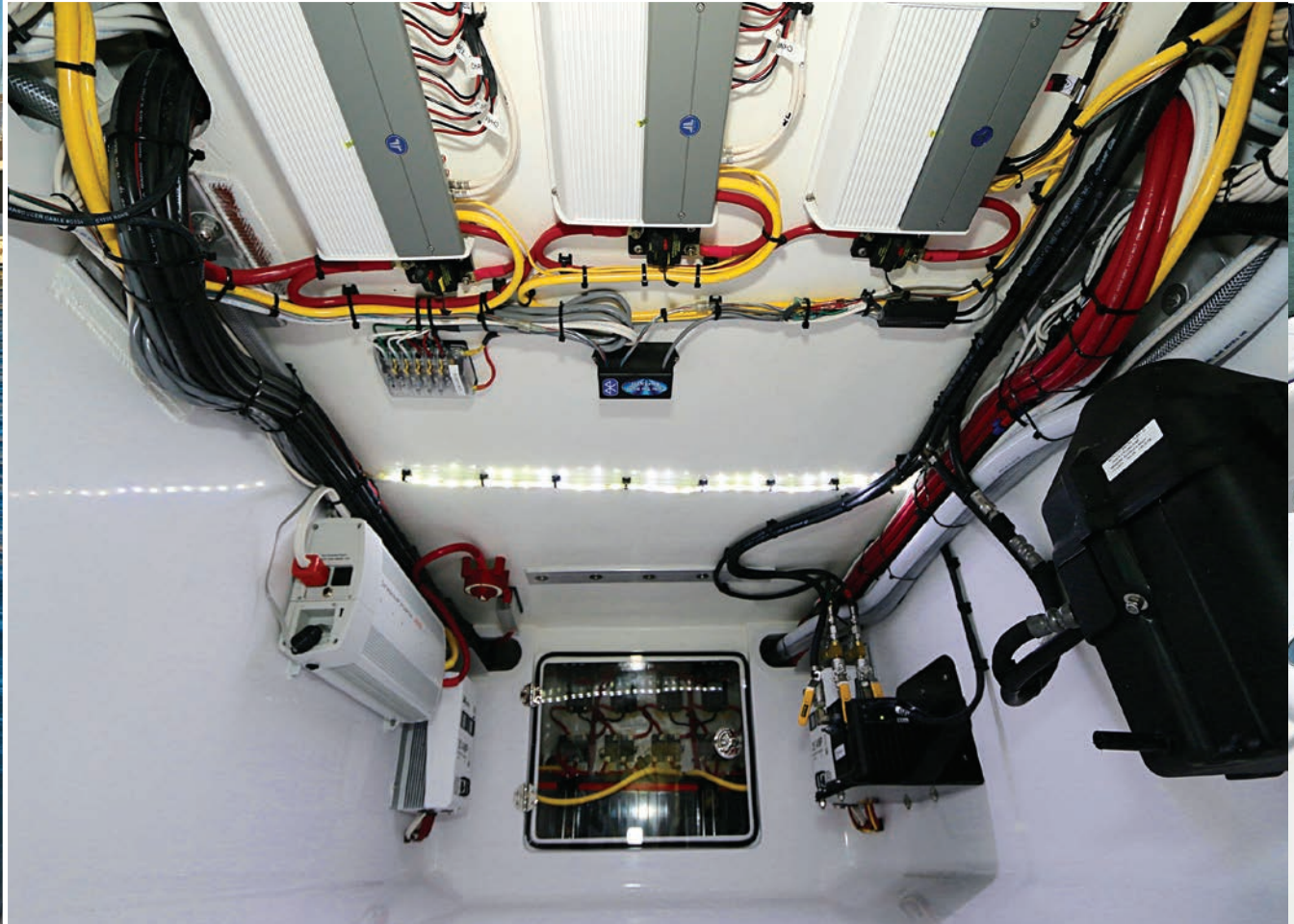
The newest addition to the Bahama family.

The Bahama 34 features the same design DNA as its larger relatives, in a more nimble package. Its qualities of engineering & manufacturing are equal to its siblings & remarkable for its size range, while its ride comfort begs direct comparison with competitors in its class. This is a fully competent deep water fishing machine that outperforms its dimensions.

SPECIFICATIONS

Length:	35'-1"
Beam:	10'-6"
Draft (engines down):	2'-4"
Draft (engines up):	1'-11"
Weight:	7,000 lbs
Deadrise:	60° entry, 24° transom
Fuel:	400 gallons
Freshwater Tank:	60 gallons
Live Bait Well:	60 gallons
Engine Capacity:	Up to 1050 HP

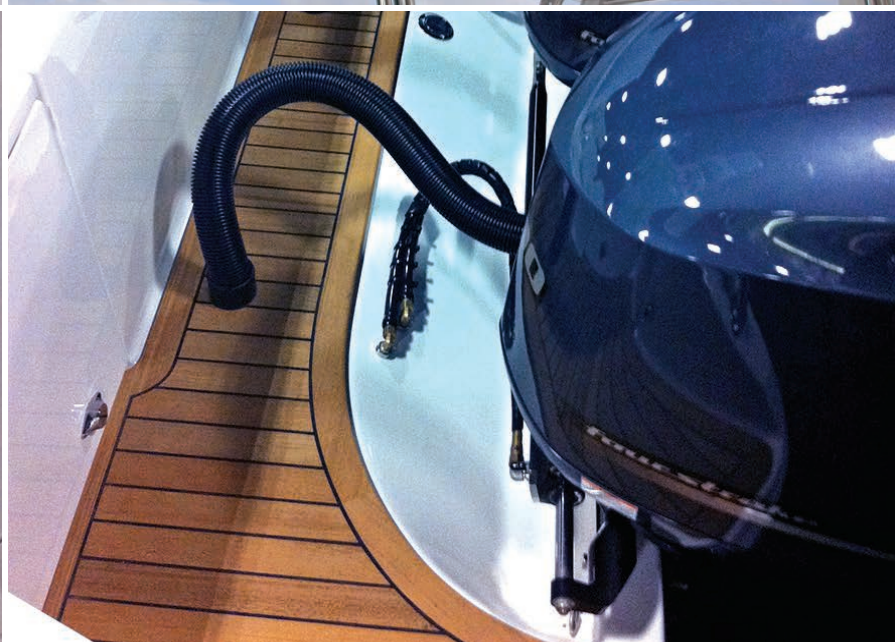
















Features we consider standard that others consider optional

STANDARD FEATURES

- CCP UV resistant Armourflex™ Gelcoat
- Vinylester and Isophthalic resins
- Vacuum bagged PVC foam core
- Massive solid fiberglass stringers and bulkheads
- Engineered hand-laid specific laminate schedule, including 045°/090° biaxial fiberglass
- Diamond pattern non-skid decks and gunwales
- Inside of all hatches finished and gelcoated
- Proprietary Double O-ring sealed hatches
- Flush mounted 316 stainless steel hinges
- Forward seating model with storage/fish boxes (Raised deck model has twin oversized fish boxes with overboard drains)

ELECTRIC FEATURES

- All dash switches protected by waterproof boots
- Circuit breaker protected systems
- 5.0 GPM saltwater wash down system
- 5.0 GPM freshwater system
- (2) 1,500 GPH live-well pump box
- LED International navigation lights
- LED Rigging compartment lights
- LED lighting in all storage compartments
- LED Console interior lights
- LED multi-color cockpit lighting with remote control
- Centroid fuel sending units
- LED Lit anchor locker & bait well
- Dual Rule™ 2,000 GPH bilge pumps with Ultra Safety Systems™ automatic switches & manual overrides
- Ultra Safety Systems™ high water alarm
- All pumps and mechanical equipment mounted in plain view with easy access

UNIQUE STANDARD FEATURES

- (2) 10" 316 SS pop-up bow cleats (blind fastened)
- (1) 316 SS pop-up LED bow light (blind fastened)
- (4) 316 SS cleats with hawse pipes (blind fastened)
- Easy bilge access with clear acrylic covers
- 3/8" acrylic windshield
- Locking & weather-tight console electronics enclosure
- Heavy duty rub rail
- Walk-through transom door
- 1/4" thick, anti-corrosion protected aluminum fuel tanks (mechanically fastened, foamed & glassed in)
- Vacuum bagged, 30lb. density - transom core
- Large or small sink/bait prep area with fresh and saltwater
- Power assist hydraulic steering
- Keikhafer™ trim tabs
- Integral fiberglass dive platform/engine bracket
- Walk-in console with 6" headroom, and space for optional head and sink
- Top loading anchor locker & built-in anchor holder

- Proprietary oversized hard top with pass through door, 3 LED spreader lights, 2 LED lights
- Custom Birdsall Marine Design™ schedule 80 leg assembly
- Molded in radio compartment with glove and locking door
- All hatches incorporate 316 SS compression latches with SS pneumatic assist struts.

OPTIONS

We offer an extensive selection of customized rigging and equipment options to choose from. Please consult with a representative to outfit your new Bahama boat... your Way!

POWER OPTION

All brands available upon request. Choice of twin, triple or quad engines, depending on model.

(Standard Features are subject to change without notice)

Bahama™
B O A T W O R K S

5490 Dexter Way, Mangonia Park, FL 33407 • Tel. (561) 882-4069 • www.bahamaboatworks.com

**Birdsall Marine
Design**